



Integrated Care: Trafford's Journey

Tuesday 4th November 2014
Health and Wellbeing Board

Carol Baker-Longshaw



Timeline

February 2009

Trafford PCT approves strategy to develop integrated care

Autumn 2009

PCT invites expressions of interest around providers around delivering integrated care

October 2011

Unscheduled Care Business Case submitted, ultimately resulting in the commissioning of the Community Enhanced Care Service

April 2012

Trafford Healthcare Trust subsumed into Central Manchester Foundation Trust

April 2013

PCFT takes over operation of Trafford community health

2007

CYP integrated area model established

April 2009

Provider/commissioner separation between Trafford PCT and community health services

April 2011

Trafford community health services goes into custody of Bridgewater

March 2012

Health and Social Care Act receives royal assent

November 2013

Community Enhanced Care service launched - aim to reduce admission to acute services

April 2010

£2million from PCT to fund "proof of concept year" around vertical integration of community health, acute services and "vanguard" GP practices

December 2010

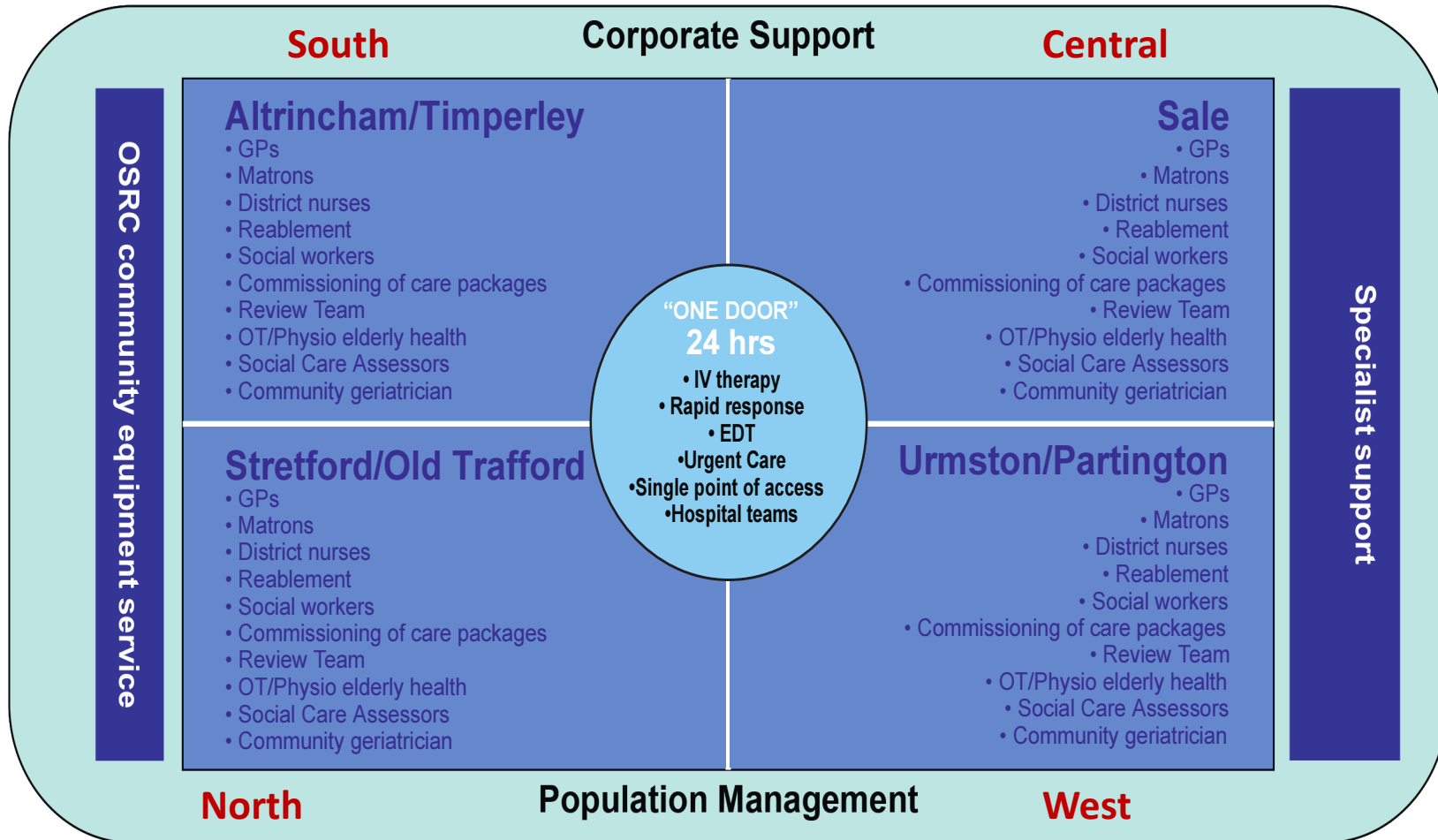
Trafford Healthcare Trust announces it is seeking acquisition; community health services can no longer be integrated

Focus shifts to adult health and social care integration

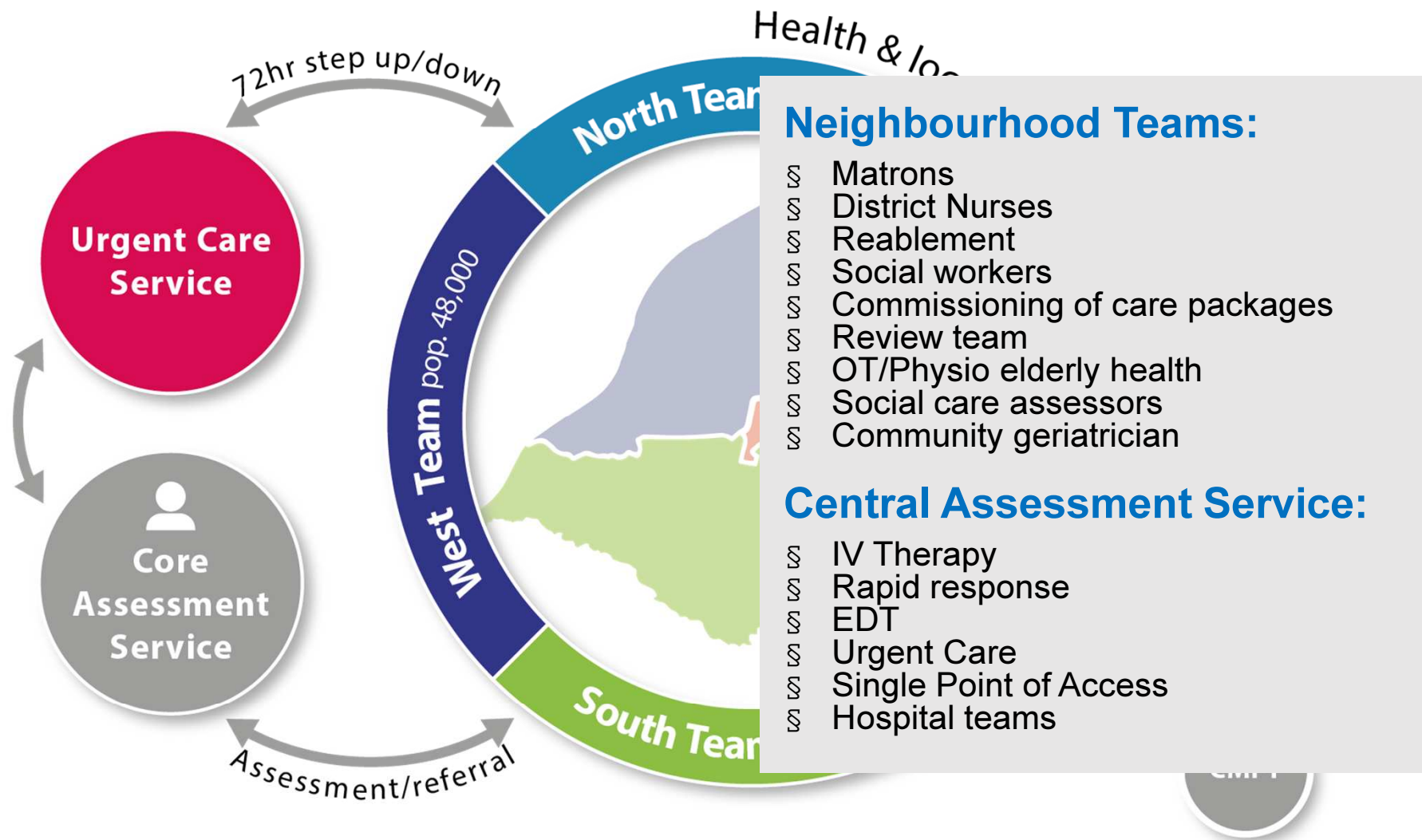
April 2014

Adult Integrated Health and Social Care Model phase 1 initiated

The Service Delivery Model

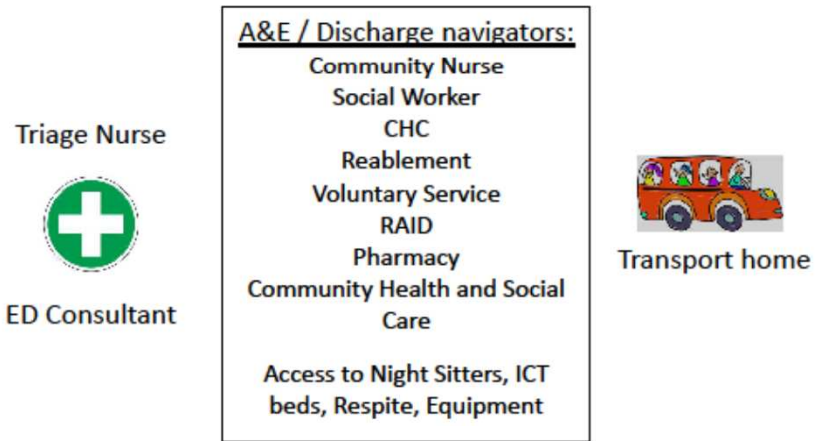


Adult IHSC model, 2014-

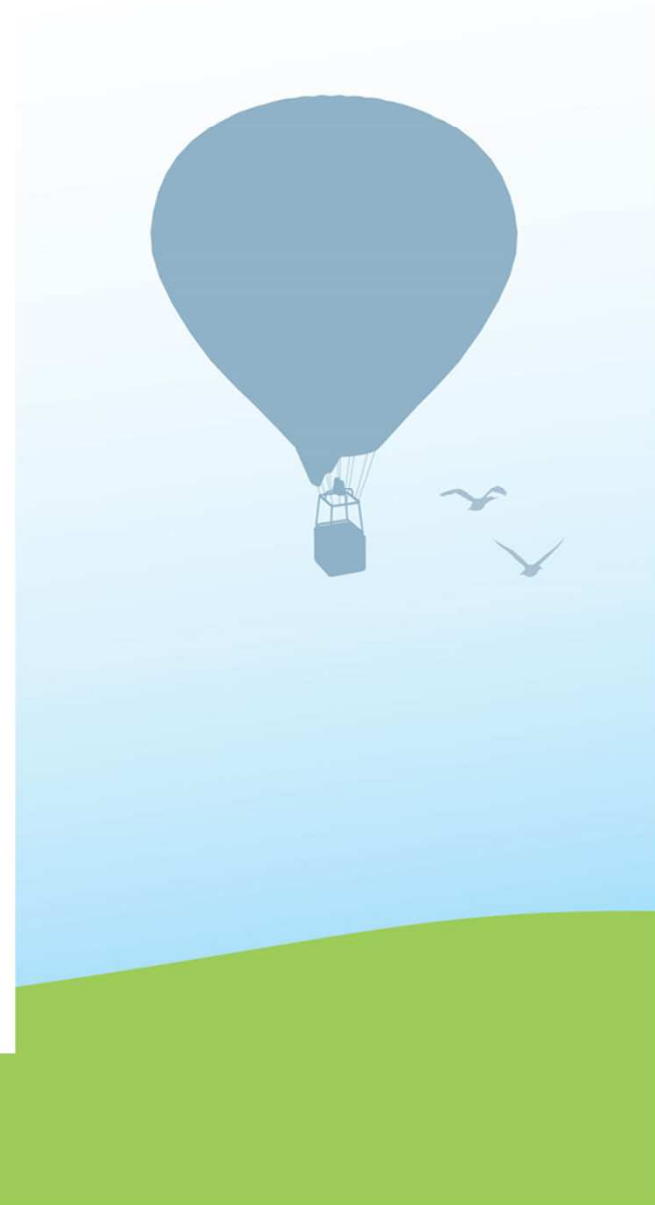
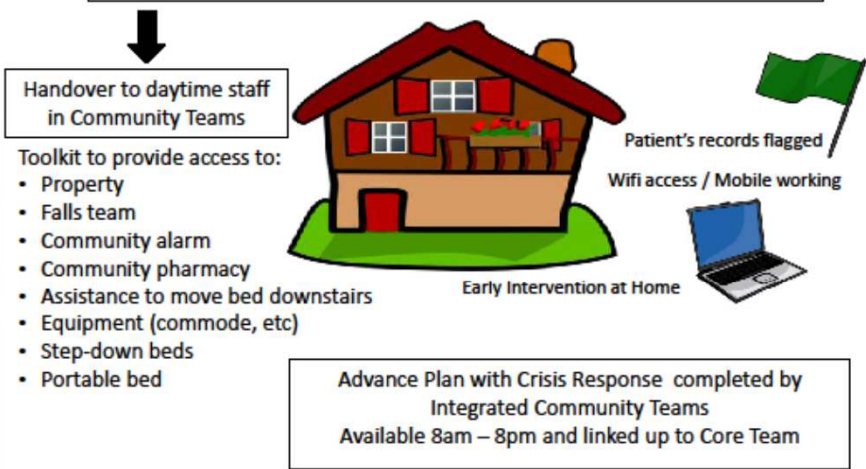


Hospital – “Not a day more”

Front Door Team – Triage Team 8am - midnight

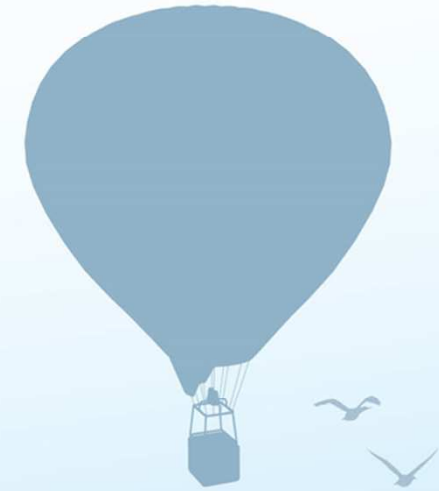


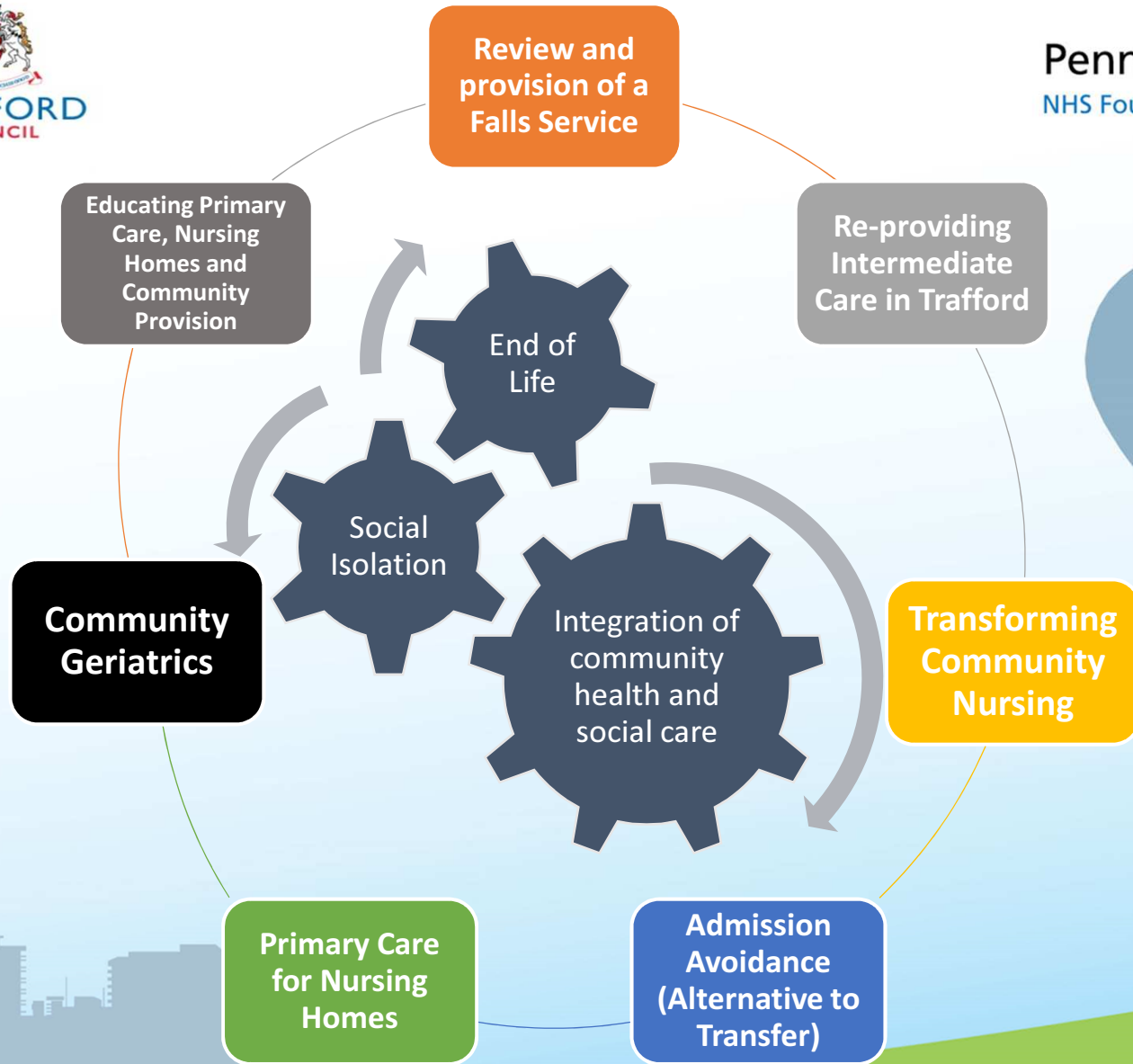
ONE RECORD – ONE PLAN



Progress:

- Staff Consultation *completed*
- Joint Heads of Service *appointed*
- Joint Operational Managers *appointed*
- New Working Model:
Pathways/Protocols/ Information Sharing in progress
- Training in Development Events *in progress*







Any Questions?

